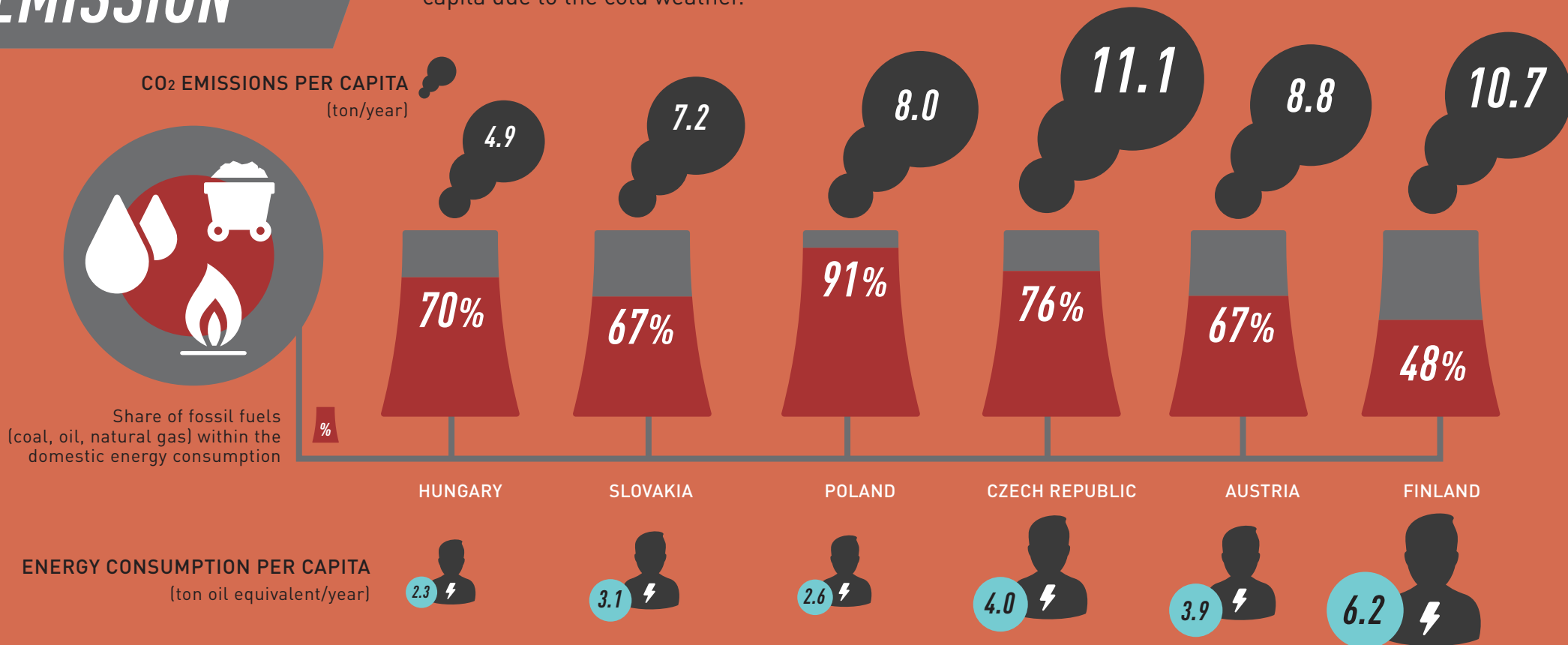


CO₂ EMISSION

Per capita, CO₂ emissions in the Czech Republic are twice as high as in Hungary, which is mainly due to the high share of fossil fuels in the Czech energy mix. In Poland coal is even more dominant within the fuel mix. While Finland's high per capita emissions are due to their outstanding energy consumption per capita due to the cold weather.



Comment: 2012-2013 data

Source: Emissions Database for Global Atmospheric Research (EDGAR), Eurostat